

# District III Scales

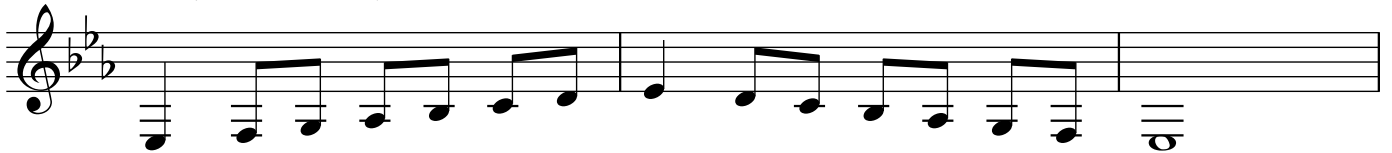
♩ = 120

Bass / Contrabass Clarinet

## *D Scale (Concert C)*



## *E<sub>b</sub> Scale (Concert D<sub>b</sub>)*



## *G Scale (Concert F)*



## *F Scale (Concert E<sub>b</sub>)*



## *B<sub>b</sub> Scale (Concert A<sub>b</sub>)*



## *Chromatic Scale* ♩=120

